

▶ **2014 FALL**

5235 Park Avenue • Hudsonville MI 49426

▶ **HUDSONVILLE FAIRGROUNDS**

4 Auction Rings!

EQUIPMENT **AUCTION**

SATURDAY, DECEMBER 6, 2014 • 10 AM EST



HEADQUARTERS - GR METRO
601 GORDON INDUSTRIAL CT.
BYRON CENTER, MI 49315
(616) 538-0367

OHIO OFFICE
9435 WATERSTONE BLVD. SUITE 140
CINCINNATI, OH 45249
(216) 732-9952

WESTERN MICHIGAN
3450 12TH ST.
WAYLAND, MI 49348

EASTERN MICHIGAN
2851 JAMES P. COLE BLVD.
FLINT, MI 48505
(248) 627-5200

NORTHERN MICHIGAN
210 NORTH GRACE ST.
MCBAIN, MI 49657
(231) 825-2175

DETROIT METRO
2000 TOWN CENTER,
SUITE 1900
SOUTHFIELD, MI 48075

1-800-LASTBID

"Leaders in Innovative Auction Marketing Methods"



**MIEDEMA
AUCTIONEERING
& APPRAISALS, INC.**

601 GORDON
INDUSTRIAL CT.
BYRON CENTER, MI 49315

FOR UPDATED LISTINGS & ADDED EQUIPMENT, VISIT MIEDEMA AUCTIONEERING WEBSITE AT: **1800LASTBID.com**

EQUIPMENT

AUCTION

Chuck Ranney
Auction Manager
601 Gordon Industrial Ct.,
Byron Center, MI 49315
616-560-0839
Chuck@1800lastbid.com



RING #1

CONSTRUCTION EQUIPMENT and TRUCKS & TRAILERS

Online Bidding Available on Ring 1 & Ring 2 Only!



CONSTRUCTION EQUIPMENT

- CAT 311B Excavator, 2001, S/N 8HR01690
- John Deere Loader Backhoe, 1985, Extend-a-Hoe, 4400 metered hours
- Komatsu 140-B Backhoe, 2005, enclosed cab, heat, Extend-a-Hoe, 92" loader bucket, 24" backhoe bucket, 19.5L24 rear tires, 2558 metered hours
- JCB 214 Backhoe, 1998, 4 speed powershift, 4 WD, cab with heat and air, radio, outriggers
- Terex 72-20 Rubber Tire Wheel Loader, cab
- Takeuchi TB145 Mini Excavator, 2000, OROPS, aux. hydraulics, new tracks, 2-speed, leveling blade, S/N 14510644
- John Deere 315 Skid Steer, 2014, 45 HP 4 cylinder engine, 1 speed transmission, 2 remotes, 72" bucket, 1,500 lb lift capacity, 10-16.5 Xtra-Wall tires, 13 metered hours, S/N 1T00315AKEG260622
- Bobcat S175 Skid Steer, 2012, Kubota diesel engine, OROPS, aux. hydraulics, power Bobtach, 10-16.5 H.D. tires, 68" bucket, S/N A31540588
- Bobcat T250 Rubber Track Skid Steer, 2006, 81 HP Kubota diesel engine, OROPS, aux. hydraulics, 18" tracks, 80" bucket, S/N 5318-11982
- Bobcat 873G Skid Steer, 2001, 73 HP diesel engine, OROPS, aux. hydraulics, new 12-16.5 H.D. tires, 74" bucket, S/N 5141-47950
- Caterpillar 247B Rubber Track Skid Steer, 2005, 60 HP diesel engine, cab with heat and air, aux. hydraulics, hydraulic coupler, 72" bucket, S/N MTZ01513
- Caterpillar 247B Rubber Track Skid Steer
- Takeuchi TL130 Rubber Track Skid Steer, 2007, diesel engine, cab with heat and air, aux. hydraulics, 2-speed, 12" tracks, 68" bucket, S/N 21308792
- Takeuchi TL140 Rubber Track Skid Steer, 2006, 81 HP Yanmar diesel engine, OROPS, 3,000 metered hours
- Case 1845C Skid Steer, 1997, diesel engine, OROPS, high flow hydraulics, new tires, new 72" bucket, 880 hours, S/N JAF0183179
- New Holland LS180 Rubber Tire Skid Steer
- JCB 506C Telehandler, 2006, 4 WD, bucket and forks
- Genie GTH844 Extend-A-Boom Fork Lift, 2006, 4 WD, 3-way steer, OROPS, 8,000 lb capacity, 44" reach
- Hyster H60C Offroad Fork Lift, 1979, Perkins 4 cylinder diesel engine, 2 speed automatic transmission, 2 stage mast, 12' height
- Ingersoll-Rand DD40 Double Drum Vibratory Asphalt Roller, Duetz engine, 40" double drum, water tanks, articulated
- All Terrain Mobile Work Platform, includes manual and DVD
- ONAN MEP003A Genset, 4 cylinder diesel engine, single axle trailer mounted, pintle hitch, hydraulic brakes
- Rustgo 195 Scaffolding Trailer
- Tarrant L222 Towable Leaf Vacuum, 1985, John Deere turbo diesel engine, 16" discharge, hydraulic raise and lower suction hose, S/N L222A3179

- NEW Gentec HT830 Hydraulic Thumb Attachment, fits loader-backhoes and excavators from 6,000 to 10,000 lbs
- NEW Gentec MT2650 Heavy Duty Universal Thumb Attachment, fits excavators up to 50,000 lbs
- NEW Gentec HT2650 Hydraulic Universal Thumb Attachment, fits excavators up to 50,000 lbs
- NEW Gentec PC60 Walk Behind Plate Compactor, OHV 6.5 HP engine
- NEW Tomahawk 78" Snow and Mulch Bucket
- Unused Lowe Hydraulic Auger 750ch with 9" & 12" bits, with skid steer quick attach
- Unused Lowe Hydraulic Auger 750ch with 9", 12", & 15" bits, with skid steer quick attach
- Unused Stout Brush Grapple 66-9 with skid steer quick attach
- Unused Stout Brush Grapple HD72-8 with skid steer quick attach
- Unused Stout Grapple Bucket HD72-FB with skid steer quick attach
- Unused Stout Brush Grapple HD72-4, close-tine, with skid steer quick attach
- Unused Stout Brush Grapple XHD84-6 with skid steer quick attach
- Unused Stout Rock Bucket Grapple HD72-3 with skid steer quick attach
- Unused Stout Rock Bucket/Brush Grapple Combo HD72-3, open-end, with skid steer quick attach
- Unused Stout Tree & Post Puller with skid steer quick attach
- Unused Stout 72" Material Buckets with skid steer quick attach
- Unused Stout 84" Material Bucket with double cut-edge, with skid steer quick attach
- Unused Stout 96" Snow Bucket with skid steer quick attach
- Unused Stout Grapple Attachment Add-on
- Unused Stout Receiver Hitch Plates
- Unused Stout Regular Weld-on Skid Steer Plates
- Unused Stout Solid Weld-on Skid Steer Plates
- Unused Stout Walk-Through Pallet Forks, 48", with skid steer quick attach
- Unused Stout Full-Back Pallet Forks, 48", with skid steer quick attach
- Unused Pallet Forks, 48", with skid steer quick attach
- 100 Gallon Fuel Tank with hand pump

TRUCKS & TRAILERS

- 1996 Peterbilt 377 Semi Truck, Cummins diesel engine, 9 speed transmission, Ultra Sleeper, engine brake, air ride suspension
- 1994 Ford LTL9000 Tandem Axle Semi Truck, Cummins N-14 500 diesel engine, 13 speed transmission, Michigan Special, double frame wet kit, air ride
- 1985 Mack R600 Tandem Axle Semi Truck, Mack diesel engine, 5 speed transmission, camelback suspension, all steel wheels

- 1988 Freightliner Cabover Semi Truck, fits loader-backhoes and excavators from 6,000 to 10,000 lbs
- 1974 Mack R685ST Tandem Axle Semi Truck, Mack diesel engine, camelback suspension, all steel wheels
- 1999 International Tandem Axle Dump Truck, DT466 diesel engine, automatic transmission, new tarp, steel box
- 1996 International 2674 Tri Axle Dump Truck, Cummins diesel engine, 8 speed transmission, leaf springs suspension, all steel wheels
- 1995 Ford L9000 Dump Truck, Cummins L10 diesel engine, 9 speed transmission, live bottom dump box
- 1989 Ford F900 Tandem Axle Dump Truck, 250 HP 6.9 liter Ford diesel engine, 13 speed transmission, all steel wheels
- 2002 Freightliner FS65 School Bus, 77 passenger
- 2002 Freightliner FS65 School Bus, 77 passenger
- 2003 IC 3800 American Trans. School Bus, 77 passenger
- 2003 IC 3800 American Trans. School Bus, 77 passenger
- 2008 Ford F350 Crew Cab Pickup, 6.4 liter twin turbo diesel engine, automatic transmission, 4x4, dually
- 1996 Ford F-250 Regular Cab Pickup Truck, gas engine, automatic transmission, long box
- 2001 Interstate Tri Axle 25 Ton Tag Trailer, air brakes, beaver tail with ramps
- 1973 Talbert 35 Ton Tandem Axle Detach Trailer, non ground bearing
- Curtis Fixed Axle Low Boy Trailer
- Keiffer 25' Tandem Axle Gooseneck Trailer, single wheel, 14,000 lb GVWR
- 2014 Freedom 42' Tri Axle Enclosed Car Hauler Trailer, rear door ramp, coin floor, cabinets, power jacks, glossy interior walls, outside lights, all aluminum wheels
- NEW Doolittle Tandem Axle Equipment Trailer, 84x18, 7,000 lb GVWR, pull out ramps
- NEW Doolittle Tandem Axle Equipment Trailer, 82x16, 9,800 lb GVWR, flip up ramps
- NEW Doolittle Tandem Axle Landscape Trailer, 84x16, 7,000 lb GVWR, 5' mesh gate
- NEW Doolittle Tandem Axle Landscape Trailer, 77x16, 7,000 lb GVWR, 5' mesh gate
- NEW Doolittle Single Axle Utility Trailer, 77x12, 5200 lb GVWR, 5' mesh gate
- NEW Doolittle Single Axle Utility Trailer, 60x10, 2000 lb GVWR, 4' mesh gate

Much more equipment to be added. Please visit 1800lastbid.com for an updated equipment list.

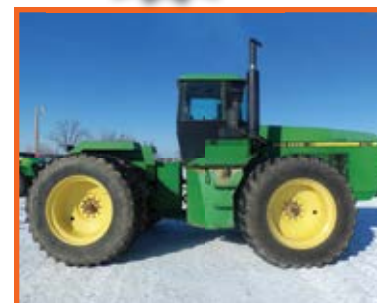


Quality Consignments Welcome – Call Chuck Ranney at 616-560-0839 for details

RING #2

TRACTORS & IMPLEMENTS

Online Bidding Available on Ring 1 & Ring 2 Only!



- John Deere 8235R Row Crop Tractor, 2011, MFWD, powershift, 7" color display, premium cab, Command View II with command arm, 60 gpm hydraulics, 13,800 lb 3pt, 5 remotes, 1000 PTO, HID light package, radar, 1300 series axle, 380/85R38 front tires, 480/80R46 rear tires, 22 front weights, front fenders, electric outer mirrors, FM premium radio, cold weather package, 1539 metered hours, S/N 1RW8235RHP046944
- John Deere 6300 Utility Tractor, 1992, MFWD, partial power shift, 540/1000 PTO, dual remote hydraulic controls, 640 loader attachment with 8' bucket, 18.4-R34 rear tires, 9611 metered hours, S/N L06300V102406
- John Deere 3155 tractor, 1991, 4X4, 6-cylinder diesel engine, SAT 11-23 tires, 3-point, PTO, 2-dual rear hydraulic ports, enclosed cab, S/N L03155V731165

- John Deere 8760 Articulated Bareback Tractor, 1990, quad transmission, cab with air, 3 remotes, 20.8R42 rear tires, 8782 metered hours, S/N RW8760H003268
- John Deere 2510 Ag Tractor, diesel, wide front, Murphy gauges
- IHC 544 Tractor with loader attachment, 50 HP 4 cylinder gas engine
- Farmall IH Super C Ag Tractor, 1954, fast hitch, restored 6 years ago
- AgChem 664 RoGator Sprayer, 1994, Cummins engine, 60/80' boom, 20" spacing, stainless steel plumbing, stainless 600 gal tank, educator, hydraulic tread/Fritz never used, foamer, 320/90R-46 tires, front fenders, Raven 460 controller, TeeJet light bar, onboard pressure, triple nozzle bodies (new 2012), clean water rinse tank, 6567 metered hours, S/N 6405984

- John Deere 893 Corn Head, 2005, telescoping shafts, single point hookup, hydraulic deck plates, outer gathering extensions, S/N H00893X711017
- John Deere 635F Combine Cutting Platform, 2008, single point hookup, stubble lights, S/N H00635F726473
- John Deere 635F Combine Cutting Platform, 2006, single point hookup, straight auger and guards, 217 metered hours, S/N H00635F716170
- Kilbros 8 Ton Gravity Wagon with Goodyear 9L15 tires
- Hitchcock 3 pt Snowblower, 2011, Model 9320HD, 9' wide, 5' high
- White Roll Over Slat 4 Bottom Plow
- 2 Bottom Plow, fast hitch
- Lineback 6' 3 pt. back blade
- King Kutter 6' Brush Chopper
- Oliver 75 Bushel Ground Driven Manure Spreader

- 3 pt. Lift Boom, heavy duty
- 3 pt. Post Hole Digger, 12" auger
- 7' Sickle Mower
- 3 Section Drag
- 2 Section Drag
- Towable Fuel Wagon, 500 gallon diesel tank
- Front Tractor Tires, 10X16.5
- Back Tractor Tires, 17.5X24
- Plus much, much more!!!**



RING #3

LAWN AND GARDEN

- Saber by John Deere 1546 Riding Lawn Mower, 15 HP Briggs & Stratton engine, 48" deck, S/N GSXSABERC012095
- Craftsman LT1000 Riding Lawn Mower, 17.5 HP engine, automatic transmission, 12 gauge heavy duty deck
- Power Pro by MTD Riding Lawn Mower, 12 HP Briggs & Stratton engine, 5 speed shift, 38" deck, S/N 3D14711-008
- Exmark Lazer Z Commercial Mower, 27 HP Kohler engine, 60" deck
- John Deere L118 Riding Lawn Mower, 22 HP engine, 42" deck

- John Deere STX 38 Riding Lawn Mower, 13 HP engine, 38" deck
- Cub Cadet Commercial Zero Turn Mower, 60" deck
- Snapper SR1433 Riding Lawn Mower, 14 HP Briggs & Stratton engine, 33" deck
- Weed Eater 95490 Riding Lawn Mower, 16.5 HP engine
- Craftsman 21" Self Propelled Walk Behind Mower
- Lawn Boy 21" Push Mower
- Echo String Trimmer
- Poulan Chain Saw

- Echo Back Pack Blower
- Craftsman Portable Air Compressor
- Red Maple Trees
- Sugar Maple Trees
- River Birch Trees
- Bartlett Pear Trees
- Apple Trees
- Flowering Cherry Trees
- Crabapple Trees
- Colorado Blue Spruce Trees
- Norway Spruce Trees
- Serbian Spruce Trees

- Austrian Pine Trees
- Canadian Hemlock Trees
- Arborvitae
- Wintergreen Boxwood
- Dwarf Alberta Spruce
- Forsythia
- Knock-Out Roses
- Northland Blueberry
- Heritage Red Raspberry
- Many more items will be added!!!**

RING #4

NEW SHOP TOOLS & MISC. EQUIPMENT

- Toro/Wheel Horse 13/38XL Lawn Tractor, 5 speed transmission, needs work
- Craftsman Lawn Tractor, 6 speed transmission, 42" deck, needs work
- Craftsman Lawn Tractor, automatic transmission, 42" deck, needs work
- Husqvarna YTH2148 Lawn Tractor, heavy duty 10 gauge deck, needs work
- Yard Machine by MTD Lawn Mower, 24" cut, needs work

- Snapper LT16 Riding Lawn Mower, needs work
- Little Wonder 5 HP Blower, needs work
- Lawn Mower Decks
- Office Desk
- Office Chairs
- Wooden rocking chair
- China cabinet with glass shelves and glass doors on the sides
- Coffee Table

- Side tables with mirrors
- 1/2 Ton Chain Hoists
- 1 Ton Chain Hoists
- 1 1/2 Ton Chain Hoists
- 2 Ton Chain Hoists
- Floor Jacks
- Bottle Jacks
- Jack Stands
- Tractor Seats
- Pipe Benders
- Chain Binders

- Chains
- Work Lights
- Engine Stands
- Cherry Picker
- Hand Tools
- Power Tools
- Tool Boxes
- Air Compressors
- Trash Pumps
- This ring had nearly 600 lots last auction!!!**

DIRECTIONS:

Auction is located just West of Grand Rapids, MI

Take I-196 to the Hudsonville / 32nd St. exit. Go North into Hudsonville to M-21 (Chicago Drive) then go West 1 mile to 40th Ave. Go North on 40th Ave. to the Auction. Auction site is located on the corner of M-21 & 40th Ave. **WATCH FOR MIEDEMA AUCTIONEERING SIGNS!**

On-Site Auction

BID
LIVE OR ON
THE INTERNET!

Can't Make it to the Auction?
BID LIVE ONLINE!
proxibid 877-505-7770
www.proxibid.com

From the convenience of your home or office.
Pre-registration is required.

Bulk tanks available, on site fueling, free delivery. Call us for all your oil & fuel needs.



Come see us for money saving coupons on lubricants and fuel delivery.



Visit us at the Miedema auction at the Hudsonville Fairgrounds on Dec. 6th.

We will be featuring discount pricing on
• Hydraulic Oil • 15W40 Motor Oil
• Grease • Antifreeze • Gear Lubes
(Available Cash and Carry Day of Auction)
2696 Chicago Drive SW • Wyoming, MI 49519 • (616) 534-2181 • 1-800-442-9110

EQUIPMENT DELIVERY TIMES:

MONDAY, DECEMBER 1 – 8AM-5PM
TUESDAY, DECEMBER 2 – 8AM-5PM
WEDNESDAY, DECEMBER 3 – 8AM-5PM
THURSDAY, DECEMBER 4 – 8AM-5PM
(DELIVERY OF MISCELLANEOUS ITEMS ENDS THURSDAY, DEC. 4 AT 4PM)
FRIDAY, DECEMBER 5 – 8AM-3PM



AUCTION

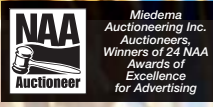
601 GORDON INDUSTRIAL CT. BYRON CENTER, MI 49315



- RING #1** Construction Equipment and Trucks & Trailers
- RING #2** Tractors & Implements
- Online bidding available on Ring 1 and 2 only*
- RING #3** Lawn & Garden Equipment
- RING #4** NEW Shop Tools & Misc. Equipment

FIRST CLASS U.S. Postage **PAID** Byron Center, MI Permit No. 19

DATED MATERIAL



EQUIPMENT AUCTION

HUDSONVILLE FAIRGROUNDS

SATURDAY, DECEMBER 6, 2014
10 AM

VERY IMPORTANT
IF YOUR MAILING LABEL HAS AN EXPRESS NUMBER, PLEASE BRING THIS BROCHURE SO THAT YOU CAN BE REGISTERED MORE QUICKLY AT THE AUCTION.



TERMS

INSPECTION:
Friday, Dec. 5 from 8 AM - 5 PM
Auction Day beginning at 8 AM

REMOVAL OF EQUIPMENT:
Auction day until 5 PM. Monday, Dec. 8th thru Wednesday, Dec. 10th - 8 AM-5 PM There will be an additional forklift available to make loading of equipment quicker during these times only.

SALES TAX:
All items will be charged 6% Michigan State Sales Tax. Titled vehicles will be charged Michigan State Sales Tax, unless you provide our office with a copy of a valid dealers license (NO EXCEPTIONS). For exemption from sales tax on agricultural items, buyers will need to sign an agricultural exemption statement.

BUYERS OF TITLED VEHICLES:
State Regulations require that we broker all vehicles sold, therefore you must sign your paperwork in the auction office. A \$95 broker fee will be charged for paperwork. In addition, a \$15 title application fee will be collected for the State of Michigan (Dealers are exempt from the title application fee ONLY). Miedema Auctioneering will then process your titles. If you wish to plate your vehicle there will be an additional fee. Proof of insurance will need to be provided for removal.

TERMS:
All items sell "AS IS WHERE IS" with no warranty. There shall be no guarantees or warranties, expressed or implied, statutory or otherwise as to the merchantability or fitness for any particular purpose of any goods offered in this sale. Some sellers may bid or buy their own items.

PAYMENT:
Complete payment auction day by cash, cashier's check, Visa, Mastercard. A 3% buyer's premium added to high bid. This 3% is waived for cash or check. Personal or company checks MUST have a bank letter of credit GUARANTEEING payment to MIEDEMA AUCTIONEERING INC. for this auction and the amount of funds being guaranteed. See guarantee form below. All written material is subject to change.
Announcements made day of sale take precedence over printer material.

BANK GUARANTEE FORM (BANK LETTERHEAD)
DATE: _____
Our bank, (banks name), irrevocably will guarantee any checks written to MIEDEMA AUCTIONEERING INC. for the purchase of items at the Hudsonville Fairgrounds auction in Hudsonville, MI on Dec. 6, 2014 by (you or your company name) from account number (fill in number) up to the total amount of \$ _____.
Sincerely,
(Bank officer's name and title)

AUCTION CALENDAR

Burnips Equipment Co Inventory Reduction
Saturday, December 27, 2014 | 9 am ET (local time)
3260 142nd Ave. • Dorr, MI 49323

Due to Burnips Equipment Company's excellent sales of new equipment, they have a large amount of used equipment they want to sell before year end! Equipment will be coming from all 5 of their locations. This is an outstanding opportunity for you to buy and get a tax write off before year end. Consignments will be accepted to add to this auction.

Bader and Sons Annual Auction
Saturday, February 28, 2015 | 9 am ET (local time)
St. Louis, MI

NOTE NEW START TIME! Because of the large amount of equipment selling, we have moved the auction start time to 9AM. CONSIGNMENTS ARE ACCEPTED! Annual used equipment auction for Bader & Sons John Deere. Used trade in equipment from all their locations will all be selling to the highest bidder. Typically over 200 pieces of farm equipment and tractors. There will be a free Pancake Breakfast 7AM-9AM, in the Bader and Sons building, compliments of Bader and Sons & Miedema Auctioneering.



For Special Auction Financing
Call 1-800-566-1993

NEED AN APPRAISAL?
CALL OUR MACHINERY & EQUIPMENT APPRAISERS AT **1-800-734-1112**
WE CAN PROVIDE MANY TYPES OF APPRAISALS FOR YOUR NEEDS
Conducting over 125 Appraisals of Business Assets Annually!